



# FLEX M

## WIRELESS RECEIVER

The versatile Flex M wireless receiver features a modular plug-and-play design (similar to a PLC) which allows one plant to use the same type of receiver component for any size application. Each essential part of a wireless receiver is built into compact, machine mountable modules. The family of modules can then be combined together to form a complete radio receiver system. The versatile Flex M can provide digital, analog or serial interfaces, and is capable of one-way or two-way communication. Flex M can manage systems ranging from simple relay outputs to complex I/O and communication networks.

### SYSTEM STRUCTURE

Each module is connected by an integral side connector that supplies internal communications and power.

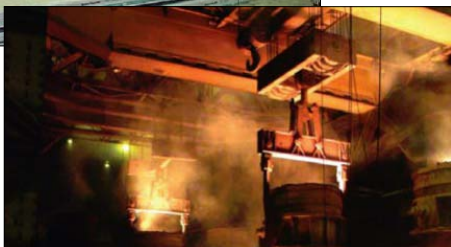
- Consists of a RF/CPU serving as the brains of the system
- Another component is the selected power module
- As many output (relay or other) or input modules as needed for the application can be added
- LED lights provide diagnostics for each individual module
- Each module has up to four removable connectors for easy wiring and replacement of any modules

### VERSATILE AND CUSTOMIZABLE DESIGN

- Engineered system offers the choice of I/O and RF power
- System can expand for different applications, making it ideal for plant wide use
- Features 35mm din rail mountable modules
- Systems requiring data feedback such as load weight are available
- Can be coupled with a user-operated transmitter or configured with another Flex M for point-to-point communications

### RANGE OF MODULES AVAILABLE

- Power supply modules: 120 Vac  
12-48 Vdc
- Two-way high power RF modules
- Digital and analog input modules
- RS-232, RS-422, and CAN-BUS serial communication modules
- Mechanical relay output modules
- Analog (0 to +/- 10 Vdc) output modules



## PERFECT FOR USE IN A VARIETY OF APPLICATIONS

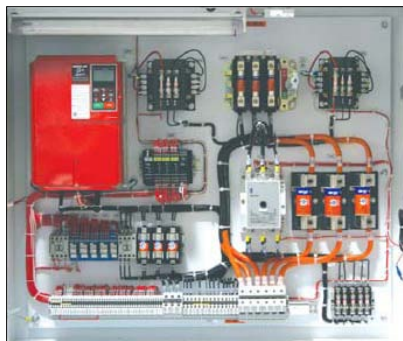
The Flex M can be customized to meet almost any application. Magnetek provides innovative, cost-effective, custom-engineered radio remote controls complete with crane interface controls. These are configured to your specifications, reducing internal engineering and manufacturing costs, improving time to market, and enhancing equipment performance. We offer complete plug-and-play control packages configured specifically for your material handling equipment, manufactured and tested on our panel assembly line.

## AVAILABLE SYSTEMS

### PRE-ENGINEERED SYSTEMS

Our Pre-engineered systems are packaged with one of our versatile transmitters, and offer features not found in most off-the-shelf systems.

- Modules mounted in a sealed NEMA 4 enclosure
- Industrial 10 amp main line relay mounted and pre-wired to terminal strip
- Circuit breakers for power protection mounted and pre-wired to terminal strip
- Antenna kit supplied and ready for field install
- Available in 16, 24, 32, and 40 output configurations
- 32 RF channels, license-free
- Optional 4-pole transfer switch for effective isolation and pre-wire output cable



## CUSTOMIZED, ENGINEERED SYSTEMS

We'll configure a system to your specifications.

- Modules mounted in a sealed enclosure (NEMA 4, 12, or stainless)
- Industrial 10 amp main line relay mounted and pre-wired to terminal strip
- Circuit breakers provided for power protection
- Antenna kit supplied and ready for field install
- Available in 16, 24, 32, 40, 48, and 56 output configurations
- Various RF choices
  - 32 RF channels, license-free, 433MHz band, TMS signaling
  - 32 RF channels, license-free, 2.4GHz, FHSS signaling
- Stepless (0-5 Vdc, 0-10 Vdc, 0-+/-10 Vdc) interfaces available
- Available in 24 Vac and 12 to 48 Vdc power supplies
- Two way RF communications for feedback applications available
- RS-232, RS-485, and CAN-BUS communication for network applications available
- Digital and analog input capability for interfacing to other devices such as scale (load weight) devices and limit switches
- Transfer switch options include Effective, Directional, and Complete isolation with 4, 10, 14, or 20 pole switches. Relay isolation also available.
- Auxiliary latching relays for lift devices available
- Stepless static (0-20V) interface
- Custom programming as application requires

The data and the products illustrated in this brochure may be modified without notice. Under no circumstances can their description have a contractual value.



**MAGNETEK AUTHORIZED DEALER**

**TER Tecno Elettrica Ravasi srl**

Via Garibaldi 29/31 - 23885 Calco (LC) - Italy

Registered Office - via San Vigilio 2 - 23887 Olgiate Molgora (LC) - Italy

Tel. +39 0399911011 - Fax +39 0399910445 - E-mail: info@terworld.com

**www.terworld.com**